

---

## SLB Series SHACKLES Load Pin

---

### FEATURES

- Monitors traction force and other force measurement
- Available in 7 standard ranges between 25 kN and 200 kN
- Stainless steel construction
- Special execution for harsh environmental conditions (IP66)
- High reliability for strict safety requirements
- Simple installation for cost-saving solutions to measurement problems

### DESCRIPTION

The Magtrol Shackles Load Pin can be used in all applications where a load measuring survey is necessary.

The load pin included on the shackle provides a proportional electrical signal according to the applied load.

The transducer is constructed with high resistance stainless steel and is insensitive to external mechanical, chemical or marine effects making them ideal for use in harsh environmental conditions.

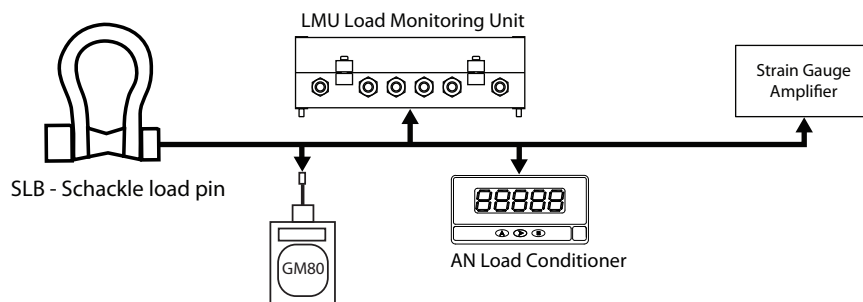


### APPLICATIONS

The SLB is designed for hoisting in several applications like cranes winches, lifting, and other marine applications. In combination with a Magtrol portable GM 80 or LMU (Load Monitoring Unit), the SLB is the most reliable and simplest method to control your load application.

### SYSTEM CONFIGURATION

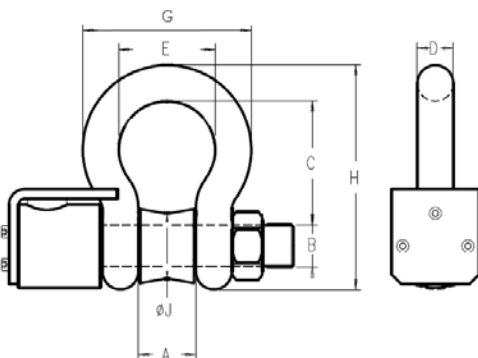
---



## TECHNICAL RATINGS

| Type  | SLB 266  | SLB 267  | SLB 268      | SLB 270      | SLB 271      | SLB 272      | SLB 273  |
|---|--|----------|--------------|--------------|--------------|--------------|----------|
| <b>Size (inches)</b>  | <b>7/8</b>   | <b>1</b> | <b>1 1/8</b> | <b>1 3/8</b> | <b>1 1/2</b> | <b>1 3/4</b> | <b>2</b> |
| <b>MECHANICAL CHARACTERISTICS</b>   |  |          |              |              |              |              |          |
| Nominal Load  | 25 kN  | 40 kN    | 50 kN        | 65 kN        | 80 kN        | 120 kN       | 200 kN   |
| Admissible Overload   | 150% of rated load   |          |              |              |              |              |          |
| Protection Class  | IP 66 according to DIN 40050   |          |              |              |              |              |          |
| Weight (kg)   | 3.5  | 4.5      | 6            | 10           | 14           | 21           | 31       |
| Material  | stainless steel 1.4057   |          |              |              |              |              |          |
| <b>ELECTRICAL CHARACTERISTICS</b>   |  |          |              |              |              |              |          |
| Transducer Sensitivities  | 0.5 %  | 1%       |              |              |              |              |          |
| Bridge Impedance  | 350 Ω  |          |              |              |              |              |          |
| Power Supply  | 5 - 10 V   |          |              |              |              |              |          |
| Combined Error (Non-linearity + Hysteresis)   | 1 to 2%  |          |              |              |              |              |          |
| <b>ENVIRONMENTAL CHARACTERISTICS</b>  |  |          |              |              |              |              |          |
| Operating Temperature   | -25°C to +80°C   |          |              |              |              |              |          |
| Storage Temperature   | -55°C to +125°C  |          |              |              |              |              |          |
| Temperature Influence: On Zero  | ± 0.02 %/K   |          |              |              |              |              |          |
| Temperature Influence: On Sensitivity   | ± 0.02 %/K   |          |              |              |              |              |          |
| <b>CONNECTION</b>   |  |          |              |              |              |              |          |
| Cable type  | K-414  |          |              |              |              |              |          |
| Output Connector  | Radial, MS 3112 E 10-6P  |          |              |              |              |              |          |
| Connection cable Assembly   | 3 m, 6 m, 12 m ou 20 m long cable with straight connector (MS 3116 J10 6S) or angled 90° (Souriau 851 08 EC 10 6S50) |          |              |              |              |              |          |
| Influence on Measurement Signal (Shift of Force Angle with Respect to Measurement Axis) | According to the cosine function   |          |              |              |              |              |          |

## DIMENSIONS



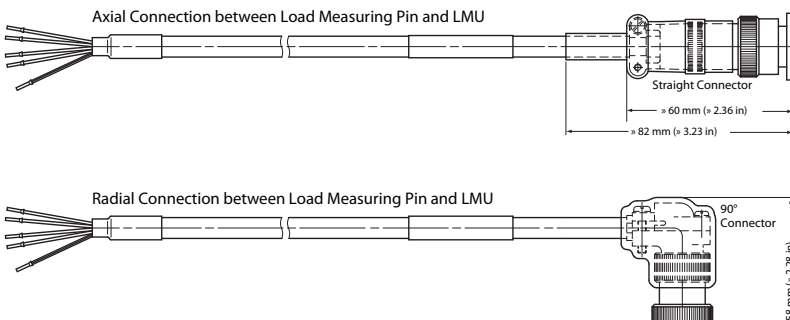
| Size (inch.) |        | Dimensions (mm) |    |     |    |     |     |     |      |
|--------------|--------|-----------------|----|-----|----|-----|-----|-----|------|
|              |        | A               | ØB | C   | D  | E   | G   | H   | ØJ   |
| 7/8"         | 25 kN  | 36              | 25 | 84  | 22 | 58  | 102 | 148 | 35.5 |
| 1"           | 40 kN  | 43              | 29 | 95  | 25 | 68  | 119 | 167 | 37   |
| 1 1/8"       | 50 kN  | 46              | 32 | 108 | 29 | 74  | 131 | 190 | 40   |
| 1 3/8"       | 65 kN  | 57              | 38 | 133 | 35 | 92  | 162 | 233 | 50   |
| 1 1/2"       | 80 kN  | 60              | 42 | 146 | 38 | 99  | 175 | 254 | 54   |
| 1 3/4"       | 120 kN | 73              | 51 | 178 | 45 | 127 | 225 | 313 | 65   |
| 2"           | 200 kN | 83              | 57 | 197 | 51 | 146 | 253 | 348 | 72   |

## OPTIONS AND ORDERING INFORMATION

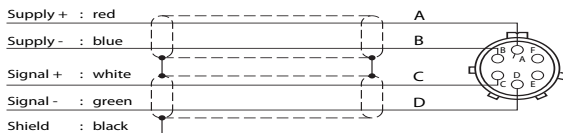
| STANDARD VERSIONS |        |                              | SL <input type="checkbox"/> / 01X |
|-------------------|--------|------------------------------|-----------------------------------|
| Size 7/8"         | 25 kN  | <input type="checkbox"/> 266 |                                   |
| Size 1"           | 40 kN  | <input type="checkbox"/> 267 |                                   |
| Size 1 1/8"       | 50 kN  | <input type="checkbox"/> 268 |                                   |
| Size 1 3/8"       | 65 kN  | <input type="checkbox"/> 270 |                                   |
| Size 1 1/2"       | 80 kN  | <input type="checkbox"/> 271 |                                   |
| Size 1 3/4"       | 120 kN | <input type="checkbox"/> 272 |                                   |
| Size 2"           | 200 kN | <input type="checkbox"/> 273 |                                   |

## ACCESSORIES

### Cable Assemblies



### Pin Configuration



### Accessory Ordering Information

#### COUNTER-CONNECTOR

Straight Connector P/N 957.11.08.0030  
 90° Connector P/N 957.11.08.0029

#### CONNECTION CABLE ASSEMBLY

Part Number EH 13  / 0  1

- Straight Connector \_\_\_\_\_ 8
- 90° Connector \_\_\_\_\_ 9

#### CONNECTION CABLE ASSEMBLY

Cable Length: 3 m \_\_\_\_\_ 1  
 6 m \_\_\_\_\_ 2  
 12 m \_\_\_\_\_ 3  
 20 m \_\_\_\_\_ 4

Due to the continual development of our products, we reserve the right to modify specifications without forewarning.



**MAGTROL SA**  
 Route de Montena 77  
 1728 Rossens/Fribourg,  
 Switzerland  
 Tel: +41 (0)26 407 3000  
 Fax: +41 (0)26 407 3001

**MAGTROL INC**  
 70 Gardenville Parkway  
 Buffalo, New York 14224 USA  
 Tel: +1 716 668 5555  
 Fax: +1 716 668 8705  
 E-mail: magtrol@magtrol.com

[www.magtrol.com](http://www.magtrol.com)

Subsidiaries in:  
 Germany • France  
 China • India  
 Worldwide Network  
 of Sales Agents

